



RCSI

Leading the world
to better health

Developing and sustaining Graduate to Advanced

Nursing and Midwifery Practitioners

Professor Thomas Kearns Executive Director

Faculty of Nursing and Midwifery and

Visiting Professor

University of Genoa



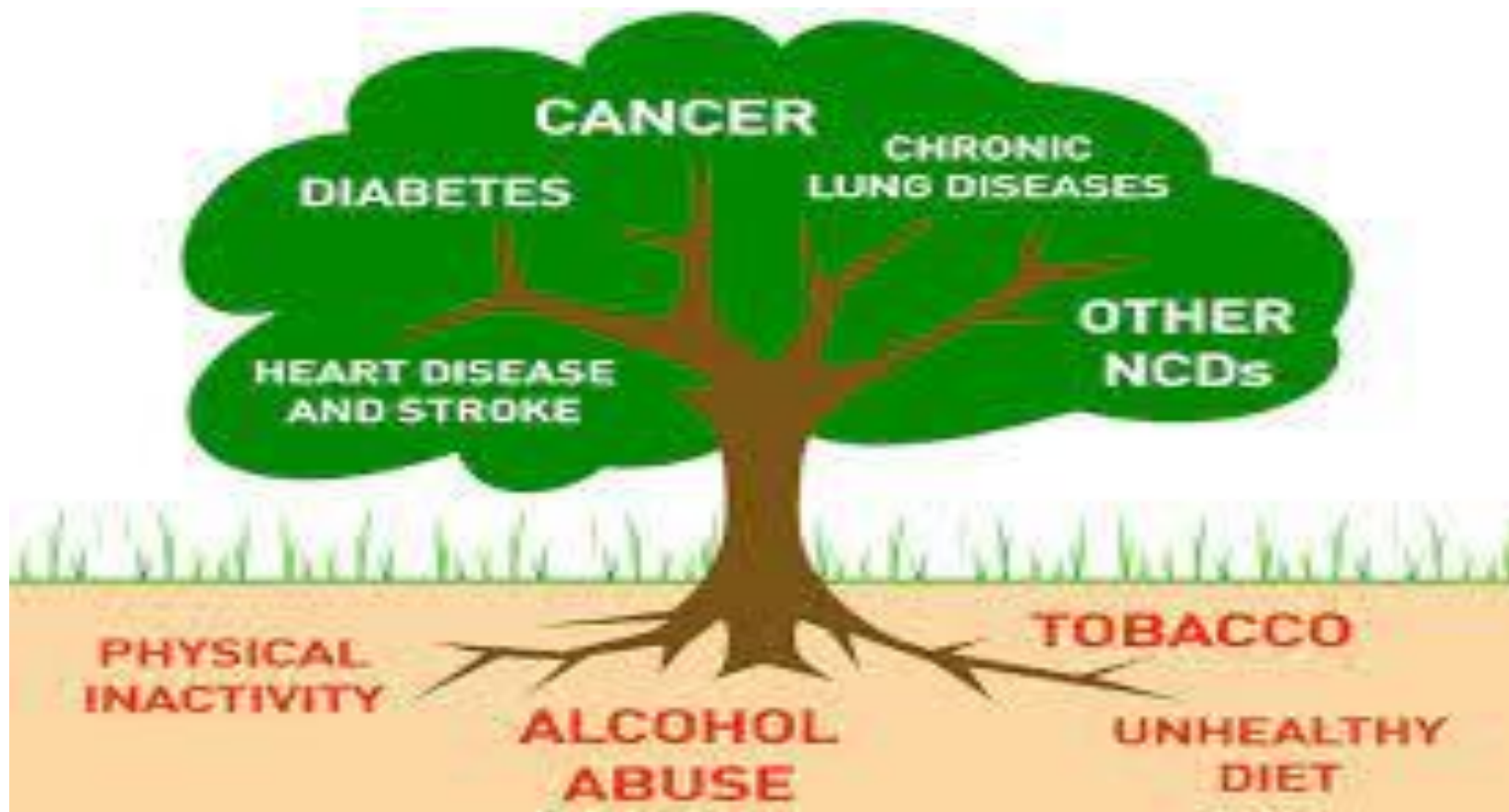
Nursing/Midwifery an interdependent relationship



RCSI

Leading the world
to better health

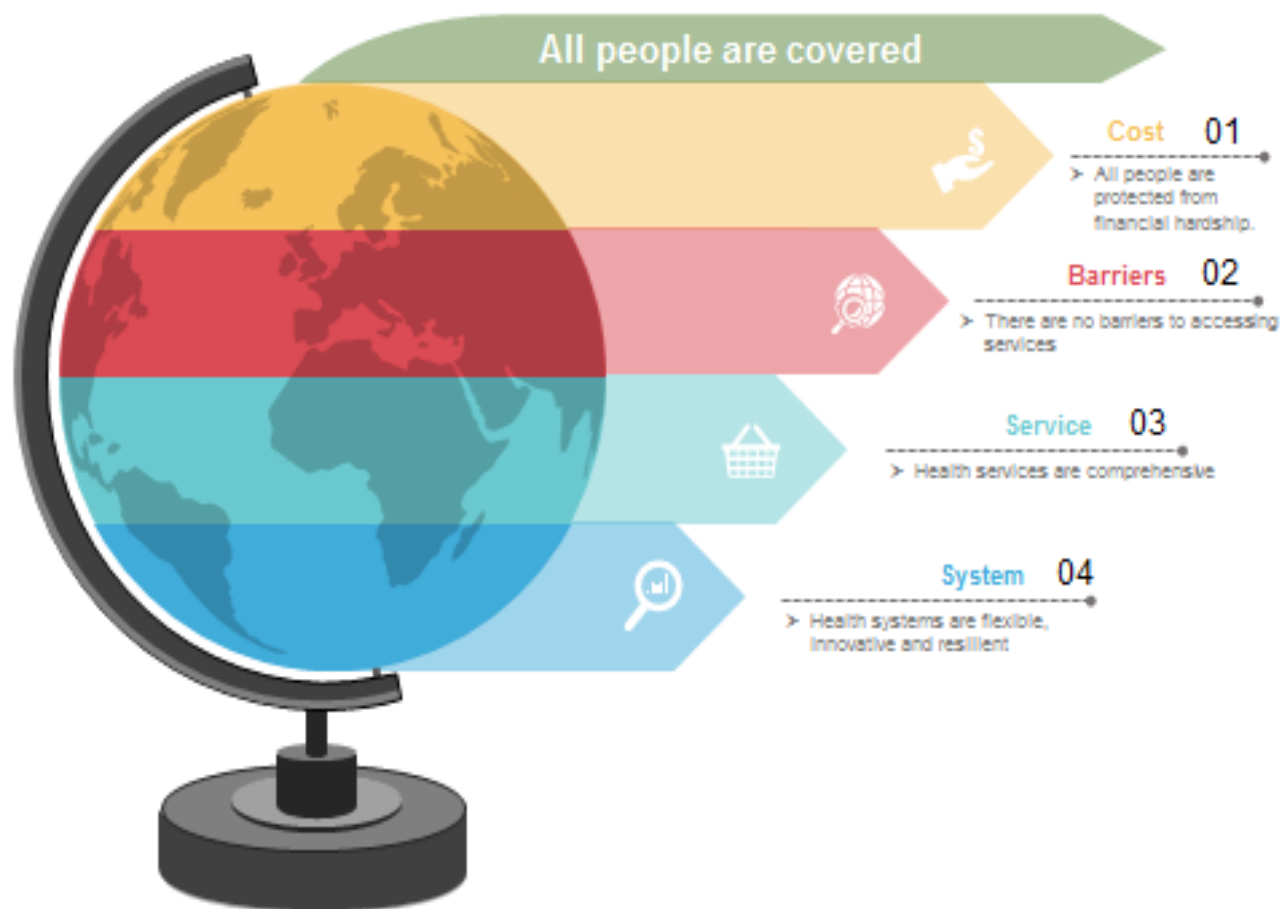
Policy Agenda (Global) NCDs & Causes:



RCSI

Leading the world
to better health

Universal Health Coverage



RCSI

Leading the world
to better health

What governments desire

Reduce Costs

Reducing the per capita cost of health care



Enhance patient experience

Improving the patient experience of care (including quality and satisfaction)



Improve Health Outcomes

Improving the health of populations



RCSI

Leading the world
to better health

Advanced Practice Policy Agenda (Ireland): A Policy on the Development of Graduate to Advanced Nursing and Midwifery Practice

This policy aims to maximise the nursing and midwifery response to current and emerging health services challenges. It provides a model to support the development of graduate to advanced practice that will assist in building a critical mass of nurses and midwives working at advanced practice level.

This is the **POLICY AND PROFESSIONAL** leadership required locally and globally to achieve the **HEALTH** agenda through expanding the scope of nurses.



RCSI

Leading the world
to better health

Policy Agenda (Ireland):

Population-based need service,

Education reform,

Flexibility in regulation and

Measurement of impact.

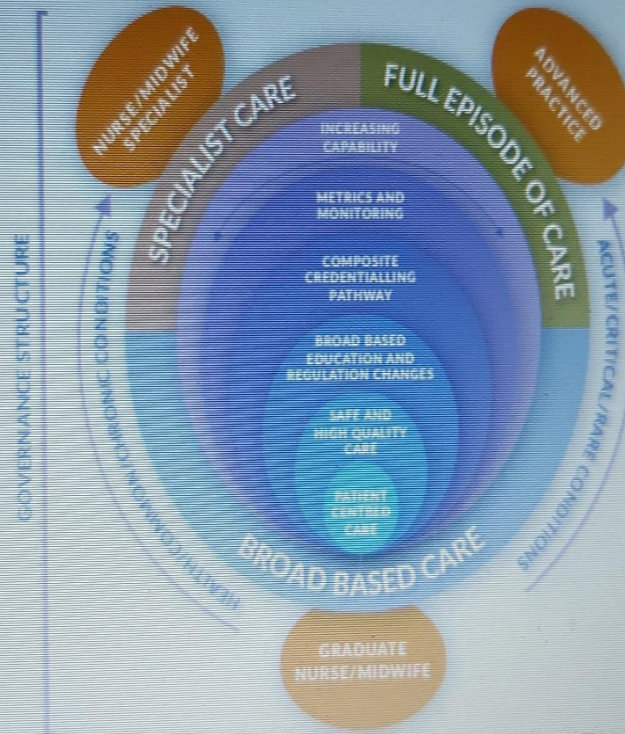


RCSI

Leading the world
to better health

Policy Agenda (Ireland):

Figure 2. Model to Advanced Practice



Policy Agenda (Ireland):

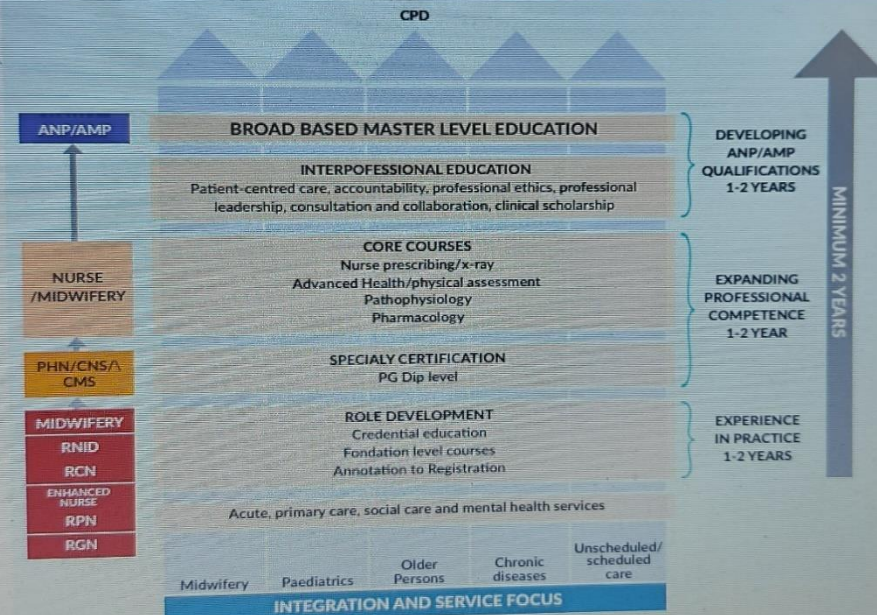
14 / 128

100%



Replace
Select
Editing

Figure 3. Education Pathway to support integrated care and within a service delivery focus for graduate to advanced practice



Policy Agenda (Ireland):

Table 4 - Levels of Education and Competency per Role

Graduate Nurse /Midwife	Clinical Nurse/Midwife Specialist	Advanced Nurse/Midwife Practitioner
Honours degree level 8 NQAI	Graduate diploma Level 9 NQAI	Masters degree Level 9 NQAI
<p>The graduate nurse demonstrates competencies in the following domains:</p> <ul style="list-style-type: none"> • professional and ethical practice • a holistic approach to care and integration of knowledge • communication and interpersonal skills • organisation and management of care <p>Personal and professional development</p>	<p>The CNS/CMS demonstrates competencies in the following domains:</p> <ul style="list-style-type: none"> • clinical focus • patient/client advocacy • education and training • audit, research • consultancy/clinical leadership 	<p>The ANP/AMP demonstrates competencies in the following domains:</p> <ul style="list-style-type: none"> • professional values and conduct competencies • clinical decision-making competency • knowledge / cogitative competencies • management / team • clinical Leadership / professional scholarship



Policy Agenda (Ireland):

Table 12 - Minimum Dataset

Impact	Data being collected	What this demonstrates
Waiting Lists	The number of patients reviewed for the first time by the ANP in scheduled care clinics. The Number of patients reviewed by the ANP in comparison to the number of patients in the clinic	Reduction in volume of waiting list numbers. Impact of ANP in the service
Hospital Avoidance	Location of the patient within the clinical setting when reviewed by the ANP Interventions completed by ANP and outcome of patient eg Referred to ANP clinic instead of acute service	Reduction in ED presentations Increase in patients seen by ANP in the community or primary care Increase no of patients seen in AMAU
Access and Choice	Number of patients reviewed by ANP throughout the healthcare setting. Indirect contacts with patients Average length of time for a patient to be reviewed by an ANP following referral	Impact of ANPs throughout the healthcare setting. Efficiency of ANPs throughout the healthcare setting
Patient Flow	Number of patients had an episode of care delivered by the ANP Location of the patient in the healthcare setting when reviewed by the ANP	Impact of ANPs in unscheduled care Efficiency of ANPs within service

Advanced Practice and RCSI



RCSI

Leading the world
to better health



Leading the world
to better health



RCSI

Leading the world
to better health



RCSI

Leading the world
to better health

Thank you

Professor Thomas Kearns
thomaskearns@rcsi.com